

AMERICAN AVK RESILIENT SEATED GATE VALVE
250 PSI, Tested to AWWA C509 (NRS)
Iron Pipe Size - Valve Sizes 2 1/2" - 8"

25/1X
IPSxIPS

Use:

For water and neutral liquids to maximum 160°F.

Tests:

Hydraulic test to AWWA C509:

Shell Test: 500 PSI

Seat Test: 250 PSI

Operating Torque Test

Optional Materials:

Stem Low zinc bronze ASTM B763

Anti Friction Washers Polyamide

Standard Materials:

Body, Bonnet,

Gland Flange

Coating

Cast iron ASTM A126 class B

Ductile iron ASTM A536

Electrostatically applied fusion-bonded epoxy-resin

Meets or exceeds AWWA C550

Wrench Nut

Ductile iron ASTM A536

- painted black for open left, red for open right.

Stem

Standard: Stainless Steel, ASTM A582

Wedge

Ductile iron ASTM A536 encapsulated with EPDM-rubber compound

Wedge Nut, Thrust Collar

Bronze

Bonnet Bolts

Stainless Steel - 316

sealed with hot melt

Gland Bolts

Stainless Steel - 316

Hexagon bolt

Bonnet Gasket

ASTM D2000 Buna "N" nitrile

Wiper Ring,

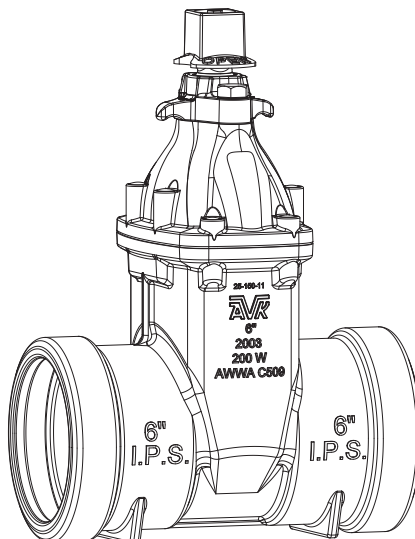
rubber

O-Ring Stem Seals,

O-Ring Gland Seal

Approvals:

Certified to: ANSI/NSF 61, ANSI/NSF 372

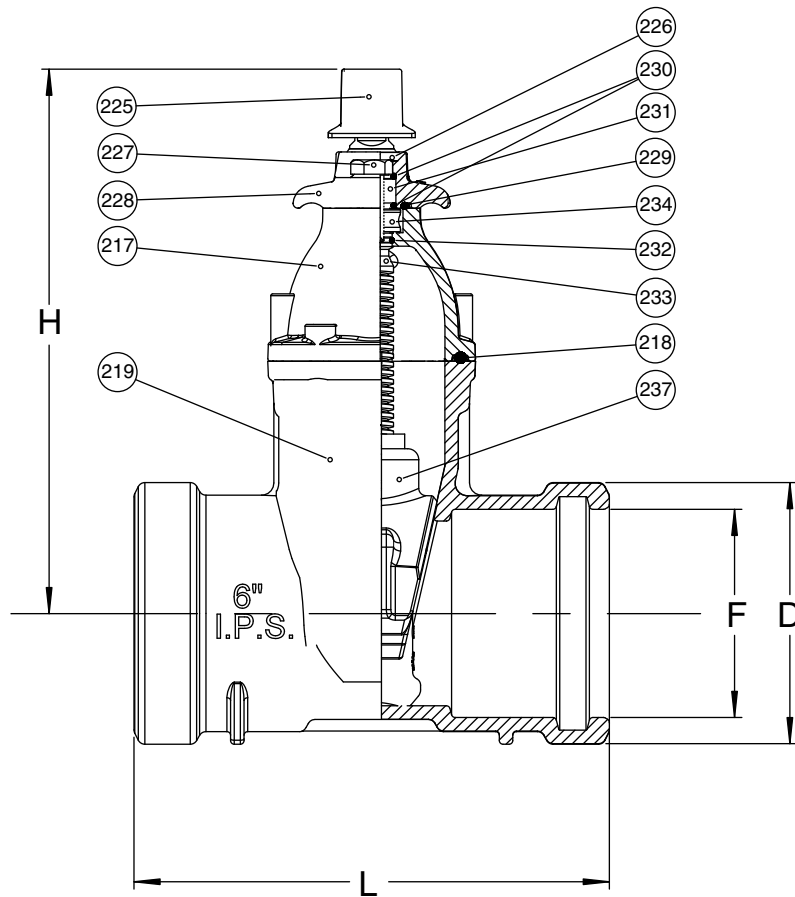


AMERICAN AVK RESILIENT SEATED GATE VALVE
250 PSI, Tested to AWWA C509 (NRS)
Iron Pipe Size - Valve Sizes 2 1/2" - 8"

25/1X
IPSxIPS

Component List:

- | | | |
|--------------------|------------------------------|-----------------------------|
| 217. Bonnet | 227. Gland Flange Bolt | 232. Lower Stem Seal O-Ring |
| 218. Bonnet Gasket | 228. Gland Flange | 233. NRS Stem |
| 219. Body | 229. Gland O-Ring | 234. Thrust Collar |
| 225. Wrench Nut | 230. Upper Stem Seal O-Rings | 237. Wedge |
| 226. Wiper Ring | 231. Stem Seal Bushing | |



Ref No.	Size	D	F	H	L	Turns to Open	Weight (lbs.)
25-065-1X	2.5"	4.20"	2.98"	11.25"	11.38"	11	32
25-080-1X	3"	5.06"	3.61"	12.50"	11.10"	13	36
25-100-1X	4"	6.05"	4.61"	13.50"	11.73"	14	46
26-150-1X	6"	8.41"	6.75"	17.50"	15.30"	20	87
26-200-1X	8"	10.74"	8.75"	21.50"	16.46"	26	133

