

AMERICAN AVK RESILIENT SEATED GATE VALVE

55/MMP/UL

250 PSI, Tested to AWWA C509/C515 - 200 PSI, for UL/FM (NRS) with Post Indicator Plate MJxMJ Mechanical Joint Ends - Valve Sizes 18" - 24"

Use:
For water and neutral liquids to maximum 160°F.

Tests:
Hydraulic test to AWWA C509/C515: UL262/FM1120
Shell Test: 500 PSI 500 PSI
Seat Test: 250 PSI 300 PSI
Operating Torque Test

Options:

Wedge Ductile iron ASTM A536 encapsulated with NBR-rubber compound

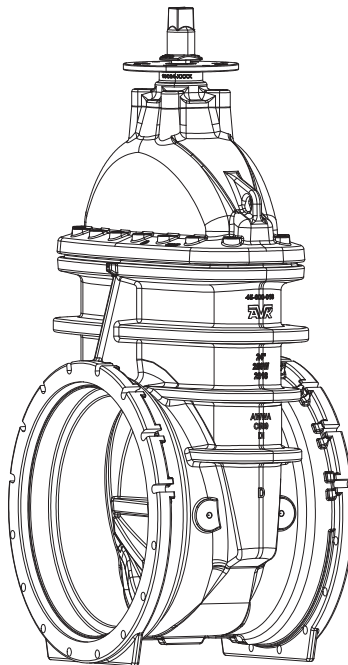
Approvals:

UL/ULC Listed
FM Approved
Certified to: NSF/ANSI/CAN 61,
NSF/ANSI/CAN 372



Standard Materials:

| | |
|--|---|
| Body, Bonnet, Post Indicator Plate, Wrench Nut | Ductile iron ASTM A536 (Wrench Nut-painted black for open left, red for open right) |
| Wedge | Ductile iron ASTM A536 encapsulated with EPDM-rubber compound |
| Stem | 316 stainless steel |
| Radial Bearing, Wedge Shoe | Polyamide |
| Coating | Electrostatically applied fusion- bonded epoxy-resin Meets or exceeds AWWA C550 |
| Wedge Nut | Copper alloy |
| Thrust Collar | Aluminum Bronze |
| Thrust Bearing | Bronze/PTFE composite |
| Bonnet Bolts, Gland Bolts | Stainless Steel - 316 sealed with hot melt |
| Bonnet Gasket, Wiper Ring, O-rings | ASTM D2000 Buna "N" nitrile rubber |



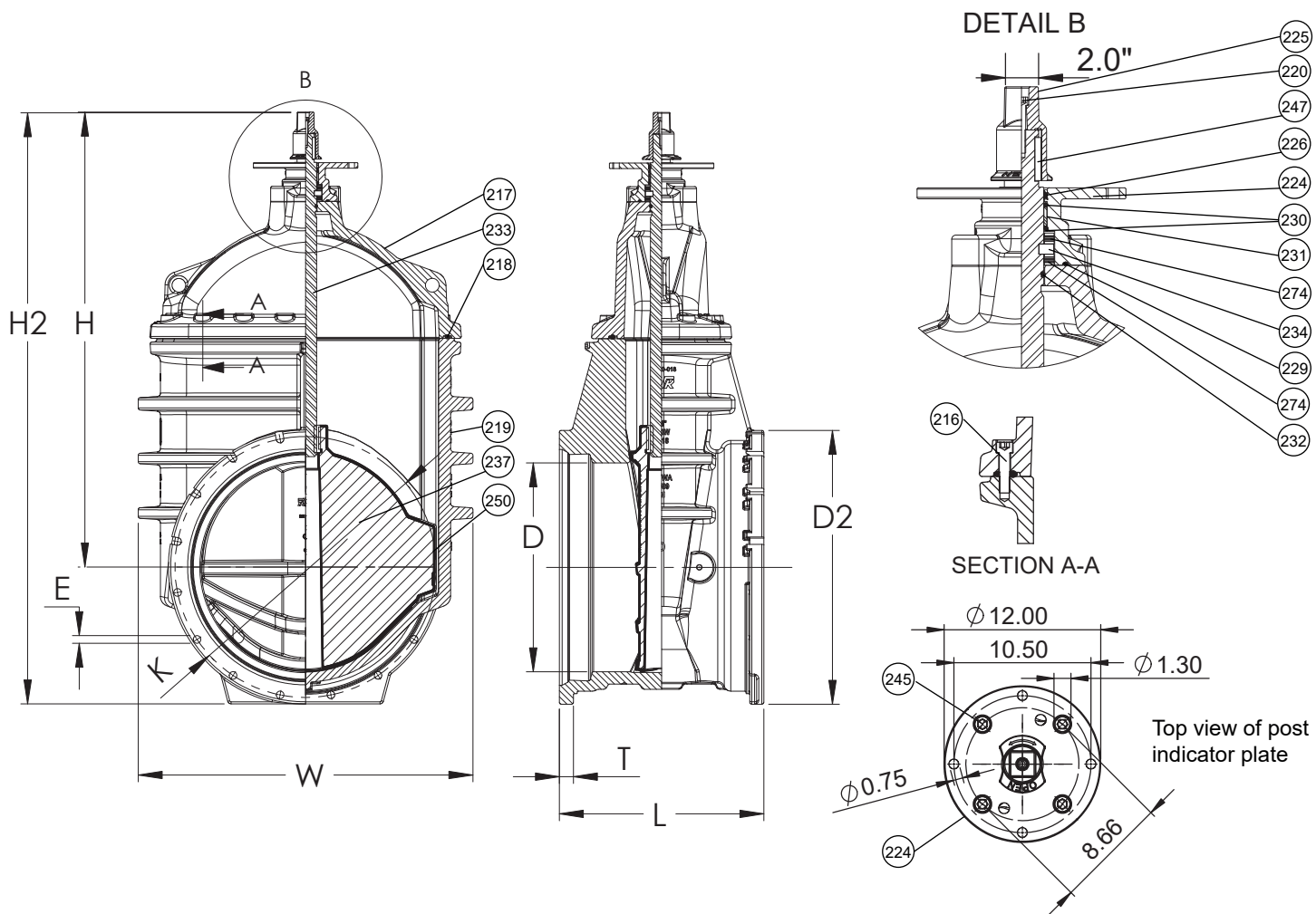
AMERICAN AVK RESILIENT SEATED GATE VALVE

55/MMP/UL

250 PSI, Tested to AWWA C509/C515 - 200 PSI, for UL/FM (NRS) with Post Indicator Plate MJxMJ Mechanical Joint Ends - Valve Sizes 18" - 24"

Component List:

| | | | |
|----------------------|------------------------------|-----------------------------|----------------------|
| 216. Bonnet Bolts | 224. Post Indicator Plate | 231. Stem Seal Bushing | 247. Stem Key |
| 217. Bonnet | 225. Wrench Nut | 232. Lower Stem Seal O-Ring | 250. Wedge Shoe |
| 218. Bonnet Gasket | 226. Wiper Ring | 233. Stem | 274. 18"-24" Bearing |
| 219. Body | 229. Gland O-ring | 237. Wedge | |
| 220. Wrench Nut Bolt | 230. Upper Stem Seal O-Rings | 245. Adaptor Plate Bolts | |



| Ref. nos | Size | D | D2 | E | H | H2 | K | L | T | W | Flange Holes | Turns to open | Wt. Lbs. |
|---------------|------|--------|--------|-------|--------|--------|--------|--------|-------|--------|--------------|---------------|----------|
| 55-450-MMP-UL | 18" | 24.73" | 18.35" | 0.88" | 46.23" | 58.71" | 23.25" | 21.00" | 1.56" | 32.95" | 12 | 41 | 1452 |
| 55-500-MMP-UL | 20" | 27.00" | 20.31" | 0.88" | 47.38" | 61.15" | 25.50" | 21.50" | 1.70" | 33.27" | 14 | 45 | 1571 |
| 55-600-MMP-UL | 24" | 31.50" | 24.00" | 0.88" | 52.58" | 68.65" | 30.00" | 23.50" | 1.90" | 38.46" | 16 | 51 | 2164 |

