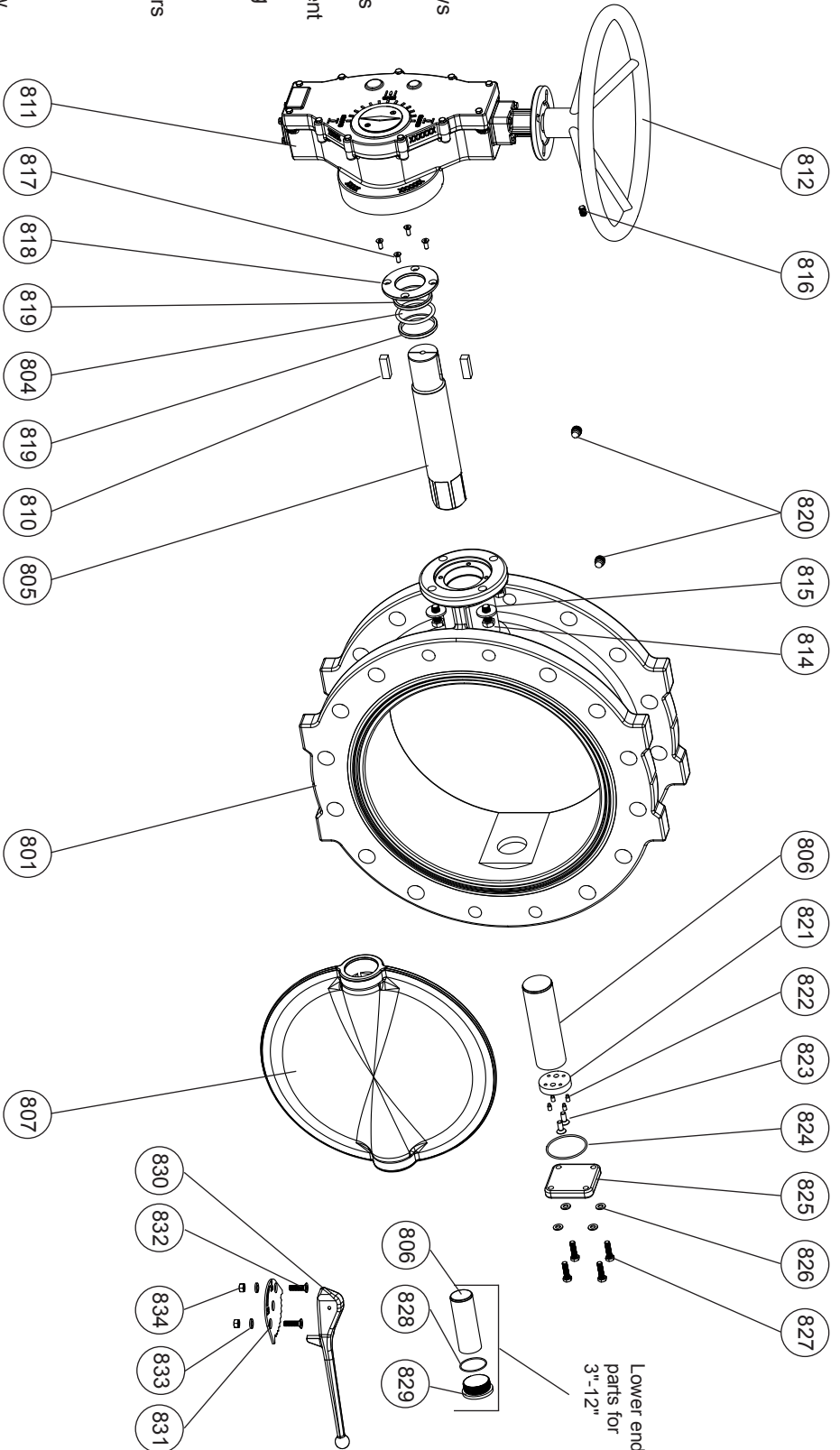


AVK Series 816 Butterfly Valve Exploded Parts Breakdown 3-inch through 24-inch

- Components:
- 801. Body
 - 804. Shaft O-ring
 - 805. Drive Shaft
 - 806. Stub Shaft
 - 807. Disc
 - 810. Key
 - 811. Gearbox
 - 812. Hand Wheel
 - 814. Gearbox Bolt
 - 815. Gearbox Washer
 - 816. Hand Wheel Set
 - 817. Sten Plate Screws
 - 818. Sten Plate
 - 819. O-ring Bushing
 - 820. Sten-Disc Screws
 - 821. Axial Bearing
 - 822. Bearing Adjustment Screws
 - 823. Bearing Retaining Screws
 - 824. End Plate O-ring
 - 825. End Plate
 - 826. End Plate Washers
 - 827. End Plate Bolts
 - 828. Sten Plug O-ring
 - 829. Sten Plug
 - 830. Lever Assembly
 - 831. Lever Plate
 - 832. Lever Plate Screw
 - 833. Lever Plate Washer
 - 834. Lever Plate Nut



Item No.	Description	Material
801	Body	Ductile iron, ASTM A536 with EPDM, NSF61 Liner
804	Shaft O-ring	NBR
805	Drive Shaft	304 Stainless steel - Class 150, 17-4PH Stainless steel - Class 250
806	Stub Shaft	304 Stainless steel - Class 150, 17-4PH Stainless steel - Class 250
807	Disc	Epoxy coated ductile iron with NiCu-7 welded edge
810*	Key	304 Stainless steel
811	Gearbox	N/A
812	Hand Wheel	Mild Steel
814	Gearbox Bolt	304 Stainless steel
815	Gearbox Washer	304 Stainless steel
816	Hand Wheel Set Screw	304 Stainless steel
817	Stem Plate Screws	304 Stainless steel
818	Stem Plate	304 Stainless steel
819	O-ring Bushing	Acetal
820	Stem-Disc Screws	304 Stainless steel
821	Axial Bearing	Aluminum Bronze
822	Bearing Adjustment Screws	304 Stainless steel
823	Bearing Retaining Screws	304 Stainless steel
824	End Plate O-ring	NBR
825	End Plate	Ductile iron, ASTM A536
826	End Plate Washers	304 Stainless steel
827	End Plate Bolts	304 Stainless steel
828	Stem Plug O-ring	NBR
829	Stem Plug	304 Stainless steel

*Key (810) not used on 3"-12" sizes.