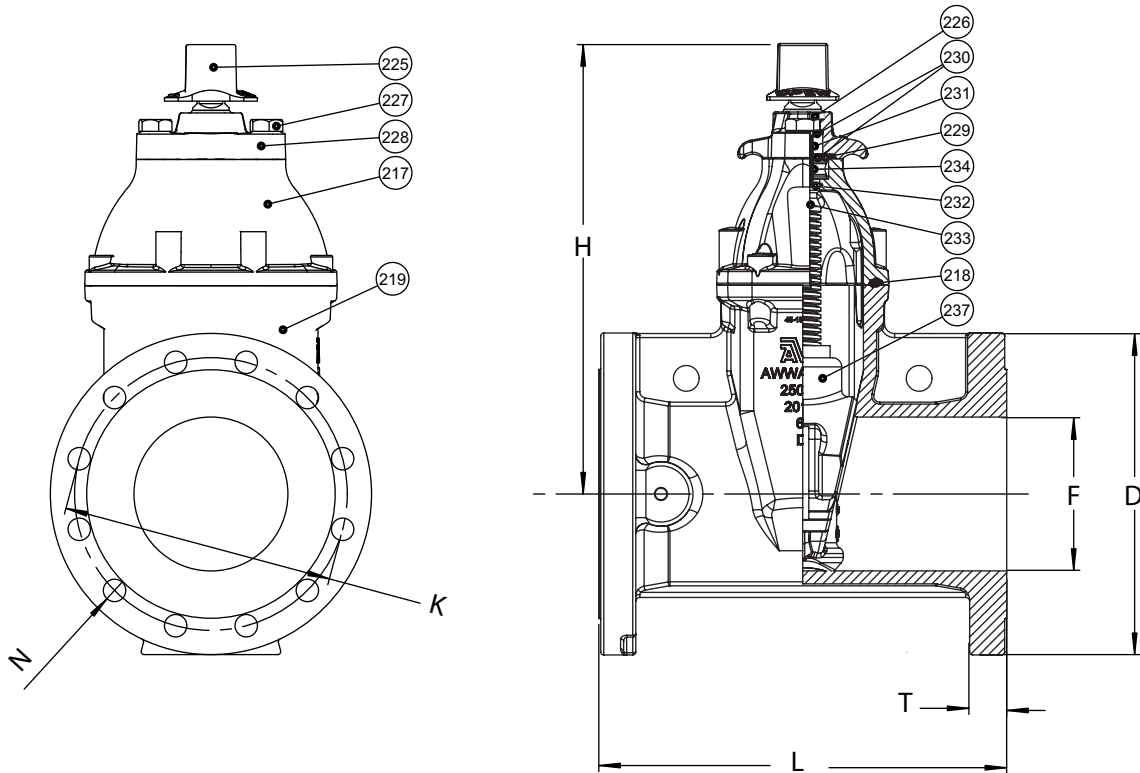


AMERICAN AVK RESILIENT SEATED DUCTILE IRON GATE VALVE
250 PSI, Tested to AWWA C509 / C515 (NRS) CWP Tested to 350 PSI
Flanged x Flanged Ends to ASME B16.42 Class 300 - Valve Sizes 4" - 12"
Laylength to ASME B16.10

45/FFH-UL
FLxFL

Component List:

217. Bonnet	227. Gland Flange Bolt	232. Lower Stem Seal O-Ring
218. Bonnet Gasket	228. Gland Flange	233. NRS Stem
219. Body	229. Gland O-Ring	234. Thrust Collar
225. Wrench Nut	230. Upper Stem Seal O-Rings	237. Wedge
226. Wiper Ring	231. Stem Seal Bushing	



RefNo.	Size	D	F	H	K	L	N	T	Flange Holes	Turns to Open	Weight Lbs.
45-100-FFH	4"	10.00"	4.00"	13.50"	7.88"	12.00"	0.88"	1.25"	8	14	91
45-150-FFH	6"	12.50"	6.00"	17.50"	10.63"	15.88"	0.88"	1.44"	12	21	161
45-200-FFH	8"	15.00"	8.00"	21.50"	13.00"	16.50"	1.00"	1.62"	12	26	244
45-250-FFH	10"	17.50"	10.00"	24.75"	15.25"	18.00"	1.12"	1.88"	16	32	366
45-300-FFH	12"	20.50"	12.00"	27.75"	17.75"	19.76"	1.25"	2.00"	16	38	541

